



4008/393 Pitt St Sydney NSW

1 1 1

This spacious one bedroom + study soars high on level 40 within the prestigious Hordern Towers. Perfectly positioned just above World Square Shopping Centre and only 450m to Town Hall, everything you could ever need is at your doorstep! Boasting expansive views in a high demand location, this is a smart move for any investor or the astute homeowner.

Type : Apartment
Price : \$ 950,000
Building Size : 85 sqm
Land Size : 85 sqm
View : <https://www.metrorealty.com.au/5389459>

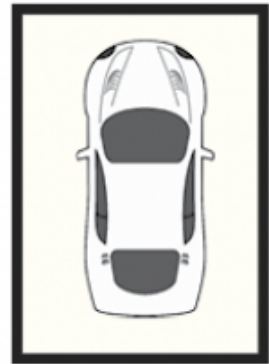
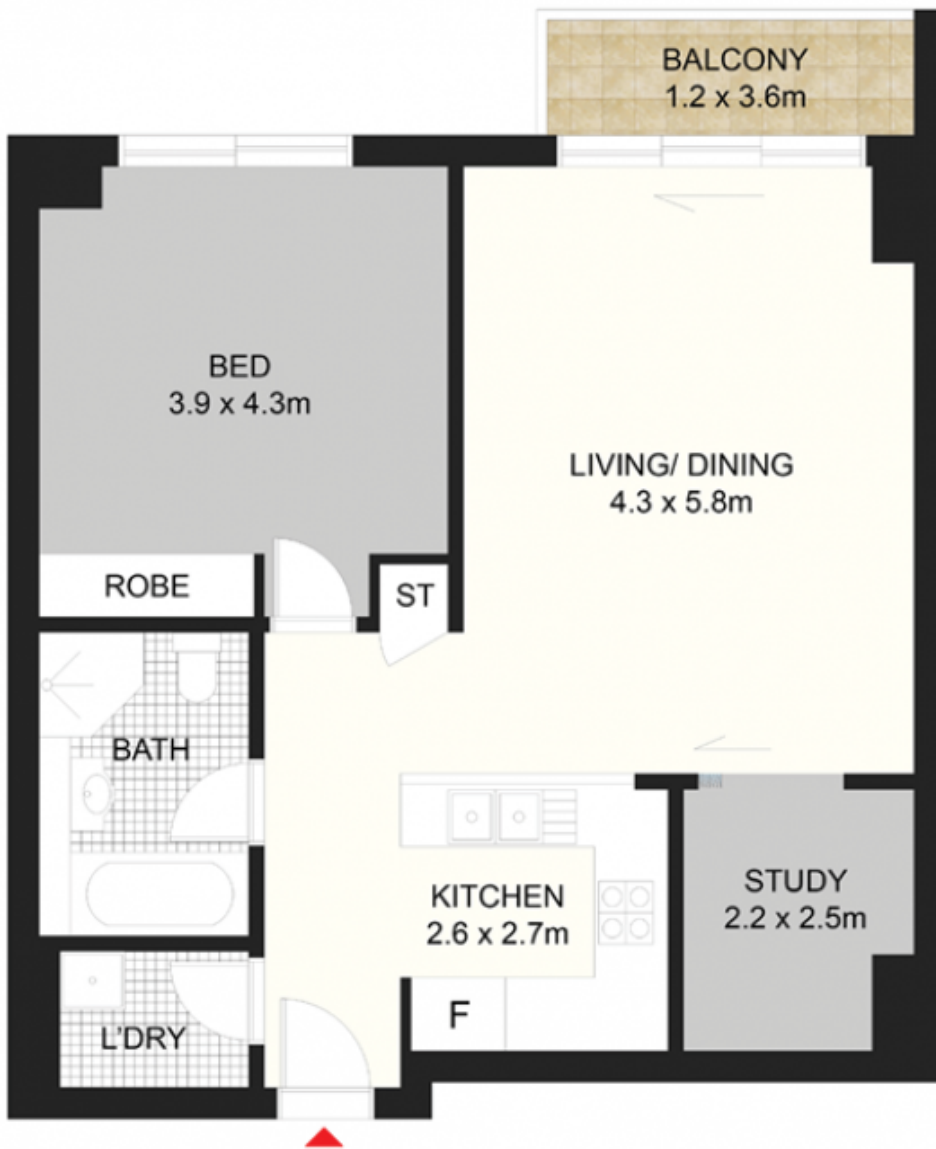
Key Features:

- Spacious and light-filled throughout
- Generous bedroom with double built-in wardrobes
- Convenient extra space with a study/guest bedroom
- Beautiful balcony with expansive views across the city and beyond

[For full version visit the website](https://www.metrorealty.com.au)



Joseph Fairchild
0425 945 888



Total Area: 85m²
Internal Area: 72m²
Car Space: 13m²

4008/393 Pitt St, Sydney

metro realty

Whilst every attempt has been made to ensure the accuracy of the floorplan, measurements are approximate and no responsibility is taken for any error, omission or misstatement. The plan is for illustrative purposes only and should be treated as such by any potential purchaser.