



## 5206/393 Pitt St Sydney NSW

3 2 2

Perched high on level 52 in the exclusive Hordern Towers, one of Sydney CBD's most well maintained and secure buildings, you won't miss a beat living here. Defined by abundant natural light and dramatic views over Sydney Tower, St. Mary's Cathedral, Hyde Park and the harbour beyond, this luxury residence, of generous proportions offers a rare opportunity in an unrivaled location.

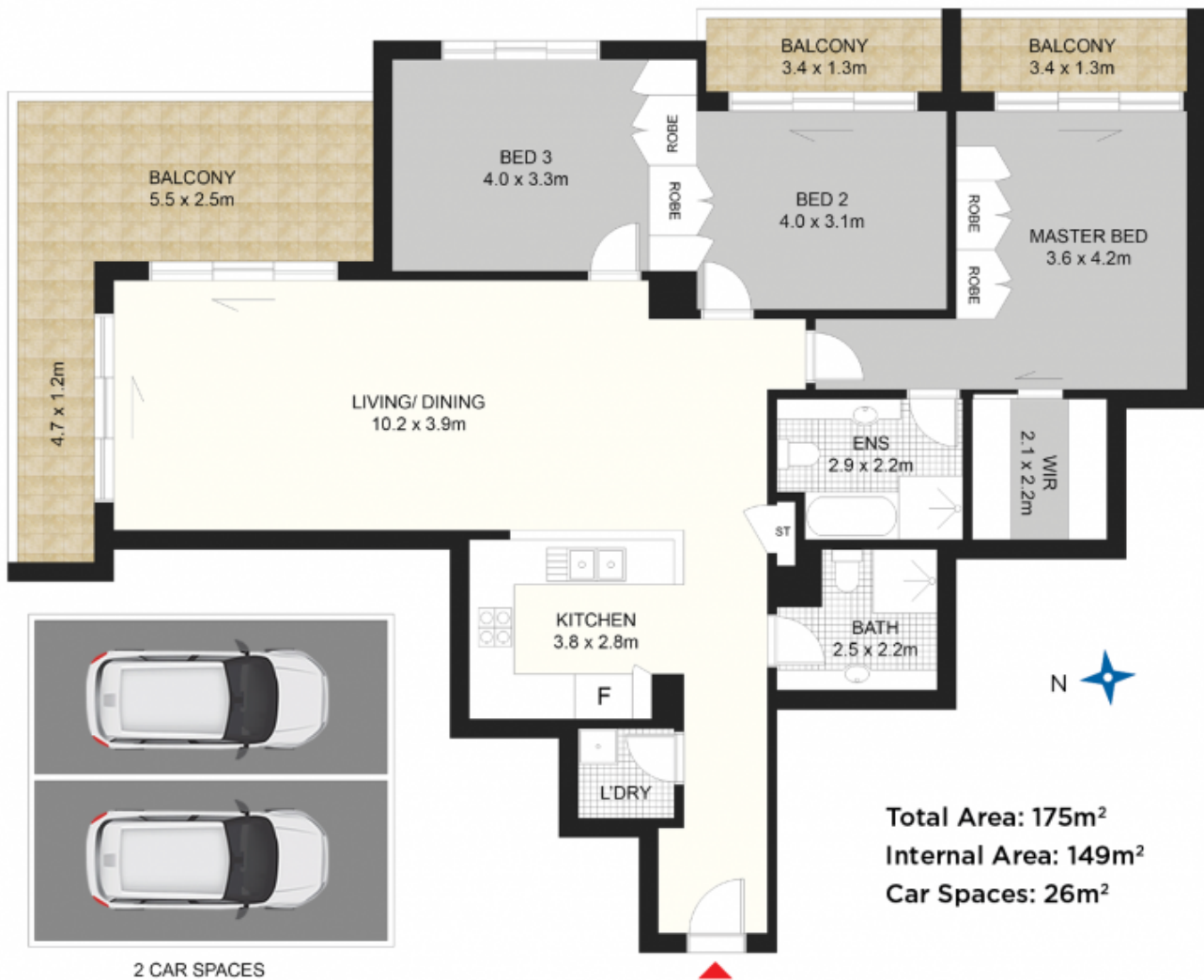
**Type** : Apartment  
**Price** : \$ 2,165,000  
**Building Size** : 149 sqm  
**Land Size** : 175 sqm  
**View** : <https://www.metrorealty.com.au/5652174>

- ? Enjoy panoramic city and water views from every window
- ? Updated with brand new plush carpet throughout
- ? Impressive main balcony enjoys abundant sunshine and jaw-dropping water views
- ? Tasteful kitchen with stone benchtops, dishwasher, gas cooking & ample storage

[For full version visit the website](https://www.metrorealty.com.au)



**Joseph Fairchild**  
**0425 945 888**



## 5206/393 Pitt St, Sydney

*metro realty*

Whilst every attempt has been made to ensure the accuracy of the floorplan, measurements are approximate and no responsibility is taken for any error, omission or misstatement. The plan is for illustrative purposes only and should be treated as such by any potential purchaser.