



## 32/91 Goulburn Street Sydney NSW

1 1

This contemporary apartment is located within the 'North' building; a building that was designed by none other than Harry Seidler, an exceptionally talented architect who has been a consistent winner of architectural awards.

With amazing convenience to the World Square, Pitt Street Mall, Chinatown and endless dining and entertainment options, this is a unique opportunity to live the ultimate Sydney lifestyle.

The apartment:

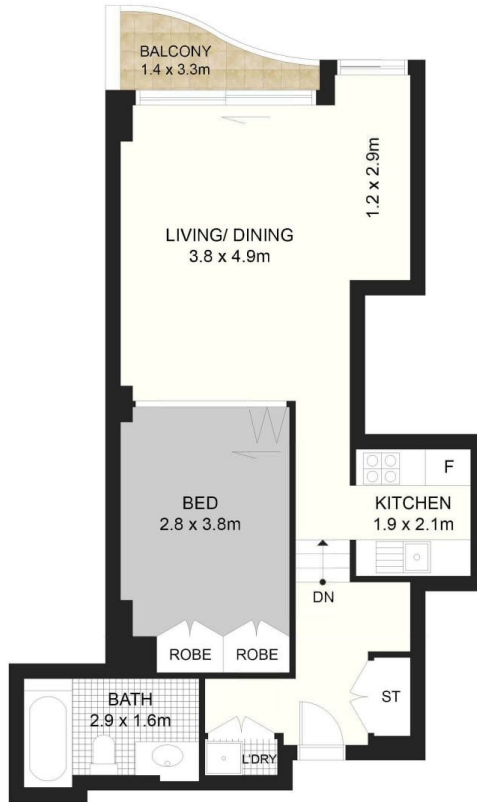
The living spaces are oriented towards the north, facing the Civic Tower and Goulburn Street. The floor to chest glass balustrades are designed to showcase full city views!

[For full version visit the website](#)

**Type** : Apartment  
**Price** : \$ 685,000  
**Land Size** : 61 sqm  
**View** : <https://www.metrorealty.com.au/5781956>



**Joseph Fairchild**  
0425 945 888



32/91 GOULBURN STREET, HAYMARKET, NSW 2000

*metro realty*

Dimensions are approximate. All information contained is gathered from sources we believe to be reliable. However we cannot guarantee its accuracy and interested persons should rely on their own enquiries.