

## 2/33 Church Street Camperdown NSW

3 2 2

Discover a home like no other in Camperdown! Spanning over an impressive 221 sqm on title, this unique four-level townhouse features three spacious bedrooms, two luxurious bathrooms, and two car spaces. Enjoy the sun-filled lounge and kitchen space, equipped with a gas kitchen, smartstone benchtops, and an extended breakfast bar. The property also boasts two balconies, internal laundry, rooftop solar panels and a Tesla wall charger.

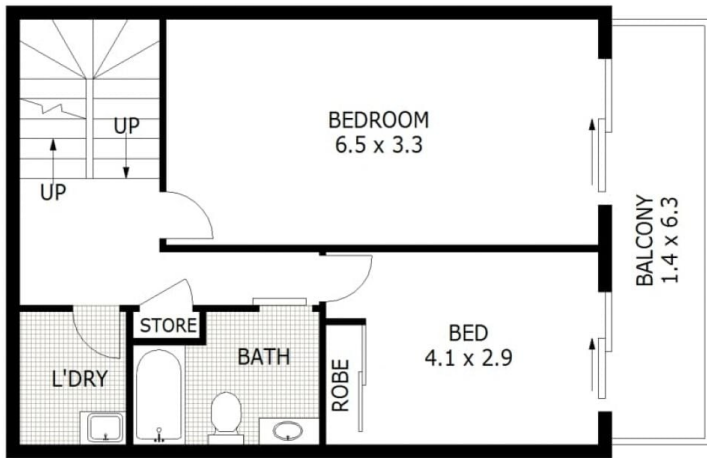
Conveniently located next to the vibrant Camperdown Commons and the fresh air of Camperdown Oval, this property offers easy access to all essential amenities. Royal Prince Alfred Hospital and the University of Sydney are a short stroll away, with Newtown and Broadway

[For full version visit the website](https://www.metrorealty.com.au)

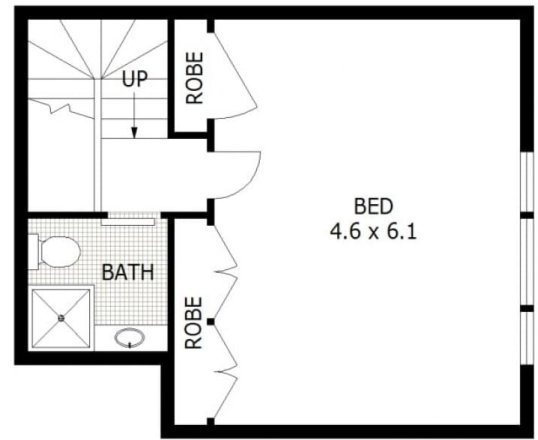
**Type** : Townhouse  
**Price** : \$1,550 Per Week  
**Land Size** : 221 sqm  
**View** : <https://www.metrorealty.com.au/6951642>



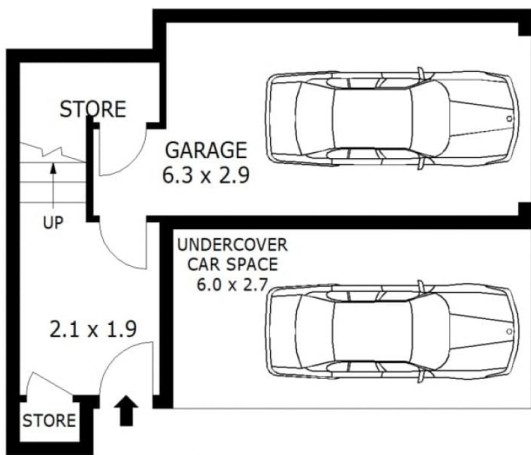
**Lachlan Macpherson**  
0450 814 080



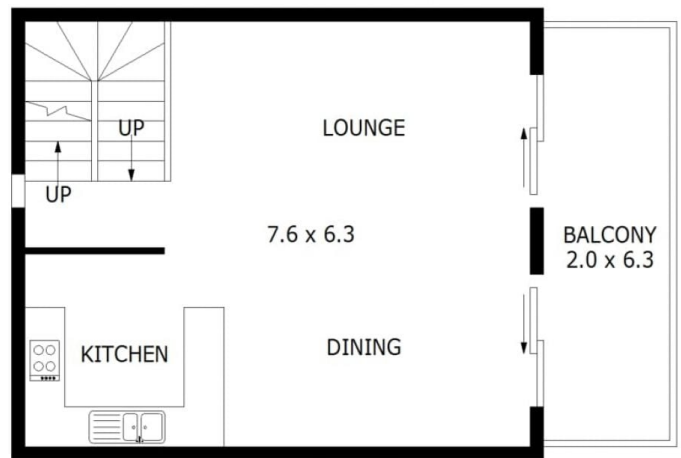
**FIRST FLOOR**



**THIRD FLOOR**



**GROUND FLOOR**



**SECOND FLOOR**



Scale in metres. Indicative only. Dimensions are approximate. All information contained herein is gathered from sources we believe to be reliable. However we cannot guarantee its accuracy and interested parties should rely on their own enquiries.

Total	- 221 sqm
Garage	- 15 sqm
Ground Floor	- 28 sqm
First Floor	- 67 sqm
Second Floor	- 65 sqm
Third Floor	- 46 sqm



# Unit 2/33-35 Church Street, Camperdown