



28/23 George Street North Strathfield NSW

2 2 1

Positioned in a peaceful pocket of North Strathfield, this well connected address places you moments from the suburb's vibrant lifestyle hubs. The popular Bakehouse Quarter is just a short stroll away, offering a lively mix of local cafés and restaurants, while DFO Homebush, Bicentennial Park and scenic bike tracks are all within easy reach. Commuting is effortless with two nearby train stations and the upcoming Metro set to further enhance connectivity to the CBD and beyond.

Set within a well maintained resort style complex, this spacious townhouse style apartment delivers exceptional proportions and versatility rarely found in apartment living. Boasting an impressive 139sqm on title plus an expansive

[For full version visit the website](https://www.metrorealty.com.au)

Type : Apartment
Price : Asking Price: \$850,000
Land Size : 139 sqm
View : <https://www.metrorealty.com.au/8648338>

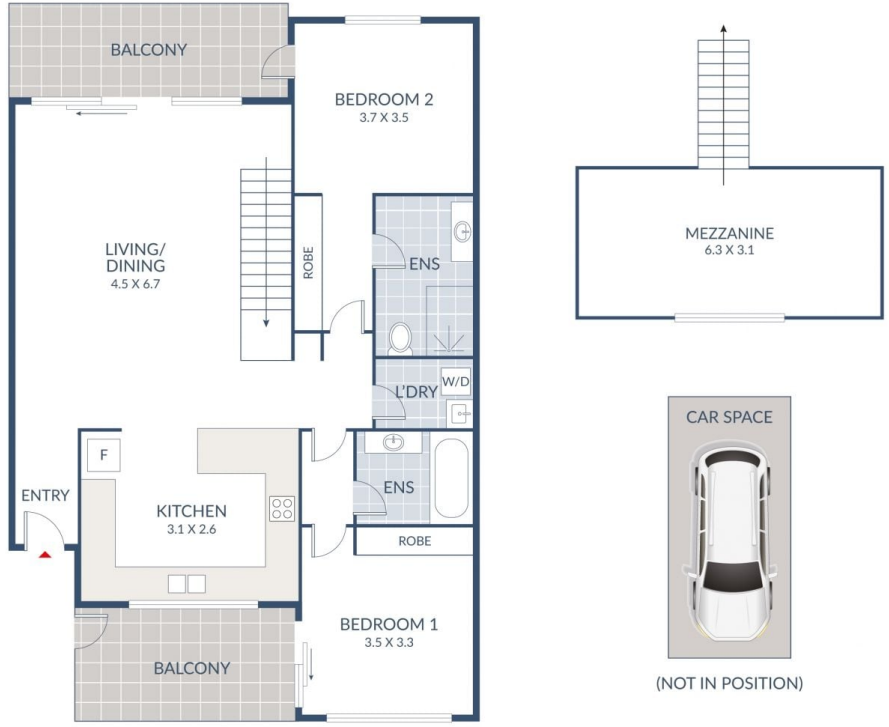


John Tsironis
0402 696 497



Alexander Gao
0423 655 624

28/23 George Street, North Strathfield



Dimensions are approximate. All information contained is gathered from sources we believe to be reliable. However we cannot guarantee its accuracy and interested persons should rely on their own enquiries.

