



323/298 Sussex Street Sydney NSW

2 🛏 2 🚿 2 🚗

Set in one of Sydney's most vibrant and connected precincts, this residence places you right on the doorstep of everything the CBD has to offer. Positioned directly opposite Town Hall Station, commuting is effortless with trains and light rail at your fingertips, while Darling Harbour, Hyde Park, and the emerging Gadigal precinct are all just a short stroll away. Enjoy the energy of the city alongside the beauty of the harbour, with waterfront dining, entertainment, and weekend fireworks creating a truly dynamic lifestyle.

Perched within the sought-after Maestri Towers, this beautifully presented dual level apartment captures breathtaking views across Darling Harbour, the iconic

[For full version visit the website](https://www.metrorealty.com.au)

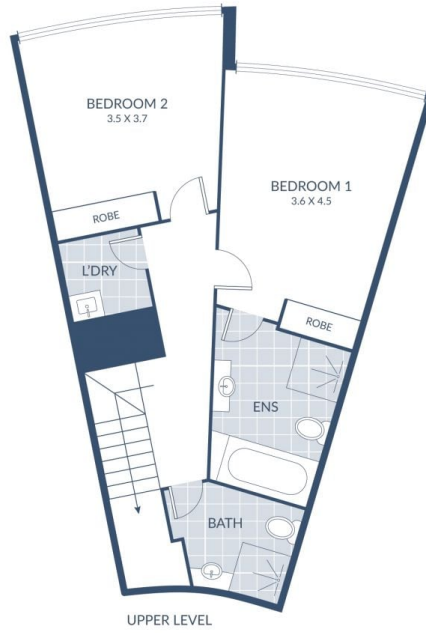
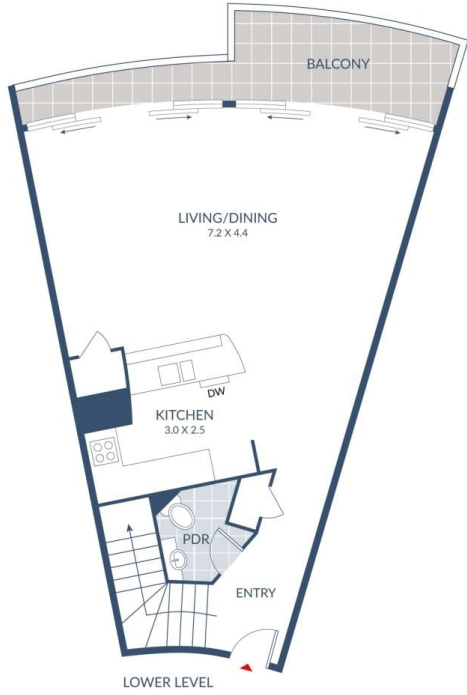
Type : Apartment
Price : Buyer Guide: \$1,300,000 to \$1,400,000
Land Size : 135 sqm
View : <https://www.metrorealty.com.au/8655090>



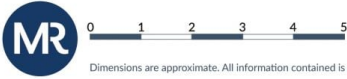
John Tsironis
0402 696 497



Alexander Gao
0423 655 624



(NOT IN POSITION)



Dimensions are approximate. All information contained is gathered from sources we believe to be reliable. However we cannot guarantee its accuracy and interested persons should rely on their own enquiries.