



## A Place with Extra Space for Your Next Chapter

Sold \$983,000

This beautifully spacious, two-bedroom apartment boasts a unique and generous layout. Attractive features such as a sunroom, balcony and extra spacious bedrooms make this fantastic for both investment or to live in.

Set within walking distance to countless city attractions, eateries and shopping destinations, offering an amazing opportunity for the smart investor, or family looking for a low maintenance and stylish property.

### Apartment Features:

- Huge free-flowing and light-filled living space with floorboards
- Quality kitchen with quality gas stove and dishwasher
- Opulent master bedroom with walk-through robe and updated ensuite with bathtub
- Generous second bedroom with large built-in wardrobe
- Fully-tiled main bathroom with new vanity
- Lovely sunroom with pleasant city views, perfect for outdoor dining
- The covered balcony extends the living space
- Ducted Air Conditioning, extra-large internal laundry with dryer
- Secure lock-up car space with plenty of room for storage

Exclusive access to Regis Towers resort style facilities including indoor heated swimming pool, sauna, spa and fully equipped gym.

### Property Facts:

Total Area: 133sqm  
Internal Area: 110sqm  
Aspect: South  
Level: 19  
Tenanted until 18/06/2020  
Rent: \$850 per week

Outgoings (per quarter):



Joseph Fairchild - 0425 945 888

joe@metrorealty.com.au

Teejay Seo - 0401 295 604

teejay@metrorealty.com.au

Strata: \$2,778

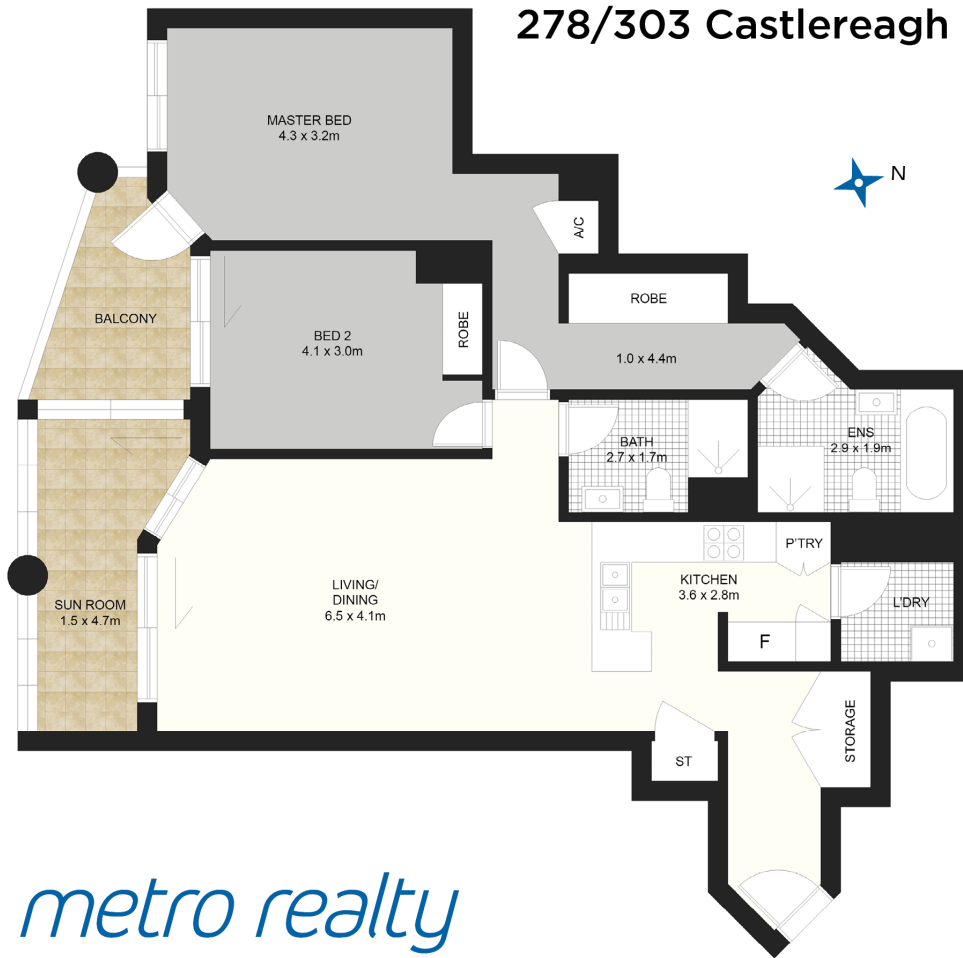
Water: \$175

Council: \$268

To make an offer please contact Joseph Fairchild on 0425 945 888 or email [joe@metrorealty.com.au](mailto:joe@metrorealty.com.au).

Disclaimer: We have obtained all information from sources we believe to be reliable; however, we cannot guarantee its accuracy. Interested parties should make their own independent inquiries as to the accuracy of the information provided.

## 278/303 Castlereagh St, Haymarket



**Total Area: 133m<sup>2</sup>**  
**Apartment Area: 110m<sup>2</sup>**  
**Lockup Garage: 23m<sup>2</sup>**



*metro realty*

Whilst every attempt has been made to ensure the accuracy of the floorplan, measurements are approximate and no responsibility is taken for any error, omission or misstatement. The plan is for illustrative purposes only and should be treated as such by any potential purchaser.

